



University of Connecticut
Financial Planning and Management

Lorraine M. Aronson
Vice President

June 24, 2008

To: Members of the Board of Trustees

From: ~~Lorraine M. Aronson~~
Vice President and Chief Financial Officer

Bruce A. DeTora ^{BAD}
Chief Financial Officer

Subject: **SPENDING PLAN FOR FISCAL YEAR 2009 FOR THE
UNIVERSITY OF CONNECTICUT, STORRS & REGIONAL
CAMPUSES**

RECOMMENDATION:

That the Board of Trustees approve the Spending Plan for Fiscal Year 2009 of \$954.2 million for the University of Connecticut, Storrs and Regional Campuses.

BACKGROUND:

The Fiscal Year 2009 Spending Plan includes \$953.3 million of revenue, including state funding of \$247.8 (excluding fringe benefits), to cover \$954.2 million in expenses, yielding a \$0.9 million net loss. The \$0.9 million net loss is comprised of a \$1.0 million gain from the reserve repayment for the November 2001 drawdown of \$11.5 million for the Towers Dining Center and Student Union and a \$1.9 million carry over from unspent FY 07 state appropriation funds for the Eminent Faculty program.

An Equal Opportunity Employer

352 Mansfield Road Unit 2122
Storrs, Connecticut 06269-2122

Telephone: (860) 486-5115
Facsimile: (860) 486-1070
e-mail: lorraine.aronson@uconn.edu

University of Connecticut (Storrs & Regional Campuses)

Financial Assumptions Related to Development of Current Funds Budget

		Fiscal Year 2009
		Annual % Change
National Inflation		2.3%
Budget Inflation		
E & G University Supported Accounts		0.0%
Energy		17.0%
Fringe Benefits		2.6%
Undergraduate In-State Rate Adjustments		
Tuition		5.63%
General University Fee		5.08%
Room Fee		8.34%
Board Fee		6.31%
Total Undergraduate Student Cost-% Change		6.44%

		Fiscal Year 2009
Financial Aid (In Millions)		
Need Based		
Grants		\$59.9
Student Labor		<u>8.7</u>
Total Need Based		\$68.6
Scholarships		
University ^(A)		\$28.8
Non-University Scholarships ^(B)		5.5
Other Student Labor		7.6
Loans		132.7
Tuition Waivers		<u>43.9</u>
Total		\$287.2

Tuition Funded Need Based % / Amount ^(C) 17.5% \$35.5

		Fiscal Year 2009	
		Amount	% Change
Enrollment Changes			
Total Enrollment (All Campuses ex UCHC)		28,529	1.2%
Freshmen		4,651	7.5%
Total Undergraduate		21,185	1.6%
Graduate		6,425	0.0%
Professional (Law & PharmD)		919	0.0%
State Support (In Millions)*		\$247.8	6.1%
*excludes fringe benefits			
Total Operating Budget (In Millions)			
Revenues		\$953.3	5.0%
Expenditures / Transfers		<u>\$954.2</u>	5.9%
Net Gain (Loss)		(\$0.9)	

^(A) Scholarships administered by the University from various sources including the UConn Foundation.

^(B) Scholarships received directly by students from various sources outside the University.

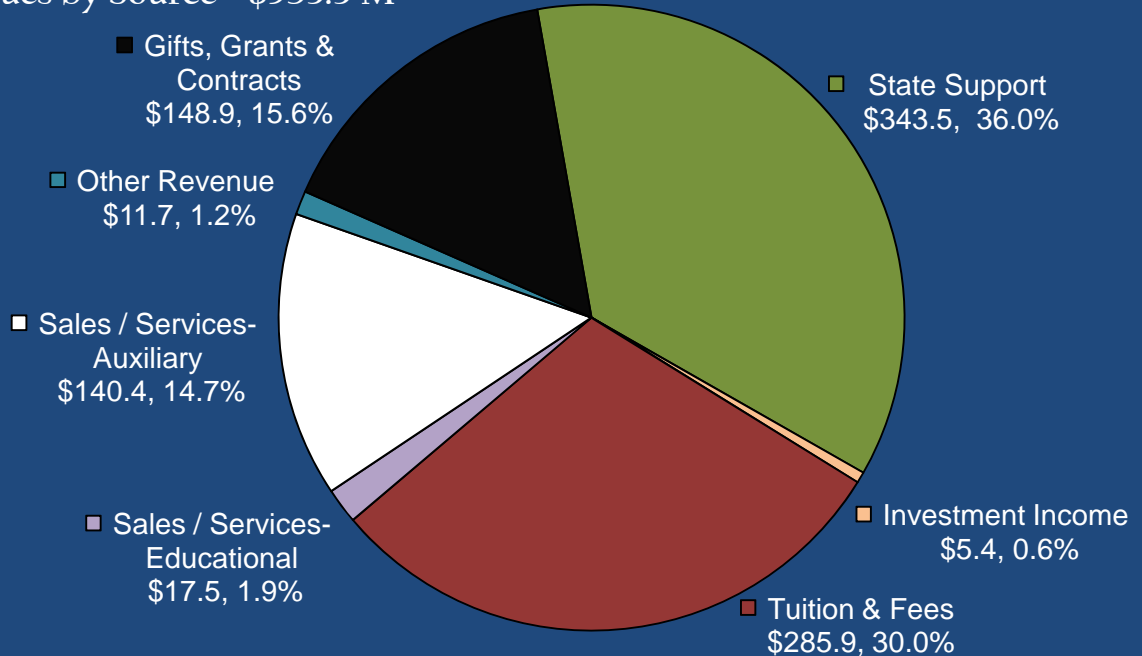
^(C) Based on net tuition revenue after tuition waivers.

University of Connecticut (Storrs & Regional Campuses)
Current Funds - Actual, Forecast and Proposed
Fiscal Years Ended June 30, 2006-2009

	<i>Actual</i>	<i>Actual</i>	<i>Forecast</i>			<i>Proposed</i>		
Revenues:	<u>FY 2006</u>	<u>FY 2007</u>	<u>FY 2008</u>	<u>Change</u>	<u>%</u>	<u>FY 2009</u>	<u>Change</u>	<u>%</u>
Operating Fund								
State Support	\$285.7	\$305.9	\$325.3	\$19.4	6.3%	\$343.5	\$18.2	5.6%
Tuition (Net of Discounts)	166.6	177.8	190.5	12.7	7.1%	203.3	12.8	6.7%
Fees	70.1	74.6	78.3	3.7	5.0%	82.6	4.3	5.5%
Auxiliary Enterprise Revenue	121.4	130.0	134.0	4.0	3.1%	140.4	6.4	4.8%
All Other Revenues	<u>92.3</u>	<u>102.2</u>	<u>106.1</u>	<u>3.9</u>	3.8%	<u>109.8</u>	<u>3.7</u>	3.5%
Total Operating Fund	\$736.1	\$790.5	\$834.2	\$43.7	5.5%	\$879.6	\$45.4	5.4%
Research Fund	<u>70.0</u>	<u>71.8</u>	<u>73.4</u>	<u>1.6</u>	2.2%	<u>73.7</u>	<u>0.3</u>	0.4%
Total Revenues	\$806.1	\$862.3	\$907.6	\$45.3	5.3%	\$953.3	\$45.7	5.0%
Expenditures / Transfers:								
Operating Fund								
Personal Services	\$344.2	\$358.8	\$381.0	\$22.2	6.2%	\$403.5	\$22.5	5.9%
Fringe Benefits	109.8	122.2	133.5	11.3	9.2%	145.6	12.1	9.1%
Other Expenses	168.1	173.7	183.7	10.0	5.8%	192.4	8.7	4.7%
Equipment	14.8	10.9	11.0	0.1	0.9%	12.9	1.9	17.3%
Student Financial Aid	67.3	76.7	81.0	4.3	5.6%	90.3	9.3	11.5%
Transfers	<u>35.3</u>	<u>41.5</u>	<u>37.5</u>	<u>(4.0)</u>	-9.6%	<u>35.8</u>	<u>(1.7)</u>	-4.5%
Total Operating Fund	\$739.5	\$783.8	\$827.7	\$43.9	5.6%	\$880.5	\$52.8	6.4%
Research Fund Expenditures	<u>67.5</u>	<u>69.2</u>	<u>73.4</u>	<u>4.2</u>	6.1%	<u>73.7</u>	<u>0.3</u>	0.4%
Total Expenditures / Transfers	\$807.0	\$853.0	\$901.1	\$48.1	5.6%	\$954.2	\$53.1	5.9%
Net Gain (Loss)	<u>(\$0.9)</u>	<u>\$9.3</u>	<u>\$6.5</u>			<u>(\$0.9)</u>		

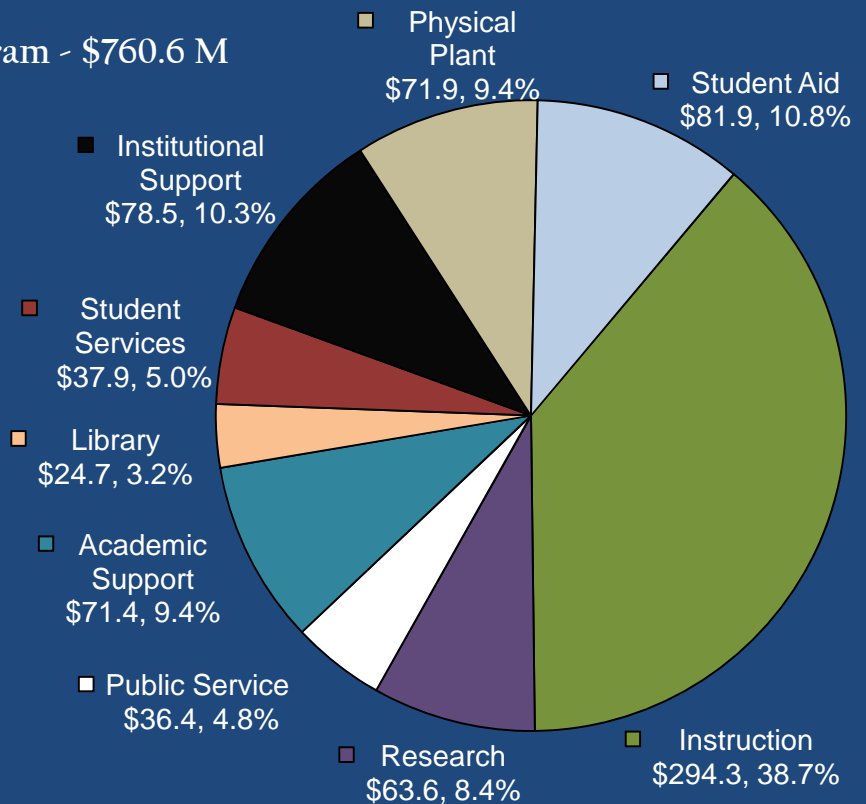
University of Connecticut (Storrs & Regional Campuses)
Current Fund Revenues & Expenditures Budget
Fiscal Year 2009 (in millions)

Total Revenues by Source - \$953.3 M



E & G Expenditures by Program - \$760.6 M

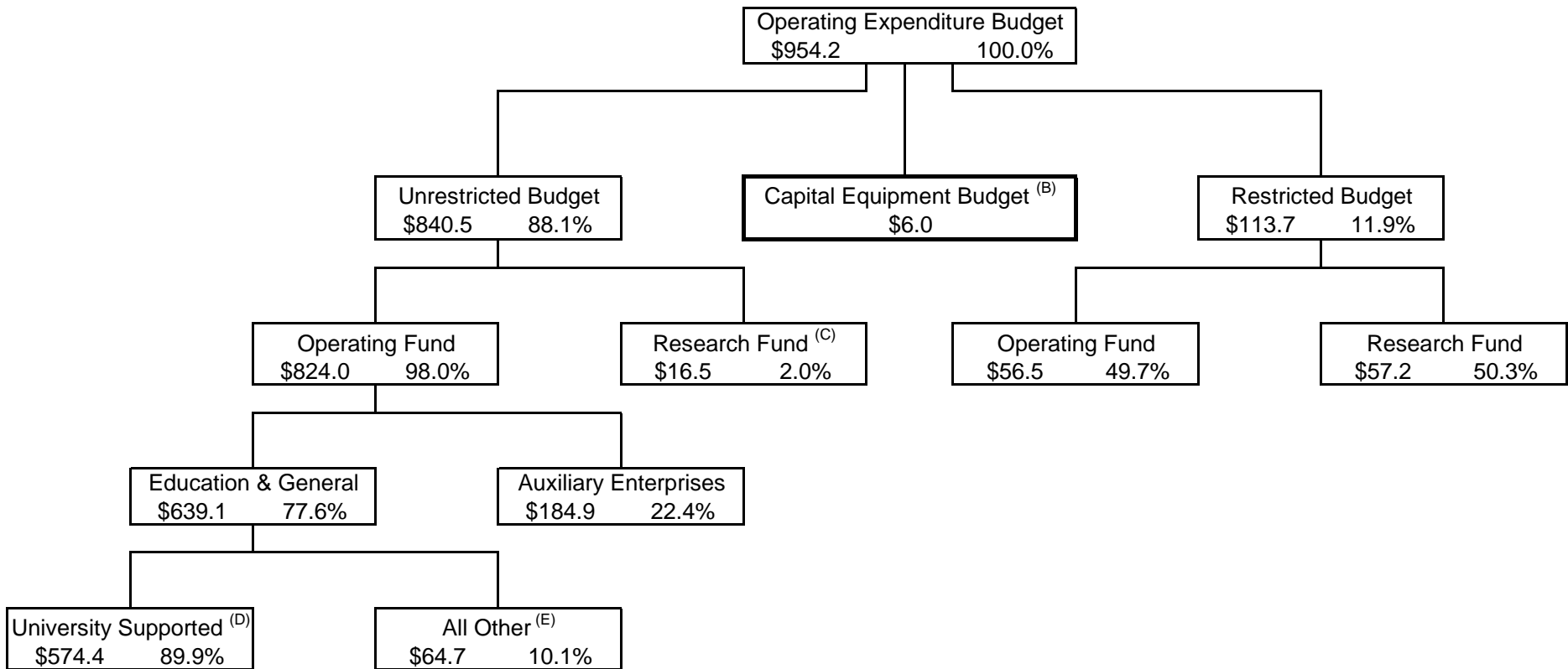
Excludes E&G Transfers (\$8.7 M) & Auxiliary Enterprises (\$184.9 M)



University of Connecticut (Storrs & Regional Campuses)

Total Operating Expenditure Budget (in millions) ^(A) - % by Categories

FY 2009



^(A) Includes transfers for Debt Service and construction projects.

^(B) The Capital Equipment Budget, funded by UCONN 2000, is shown for illustrative purposes only and is not included in the Operating Expenditure Budget figures.

^(C) This amount represents grant indirects (F&A) funding only. Sponsored grants are reflected in the restricted portion of the budget.

^(D) Primary revenue sources are the State Appropriation and tuition receipts.

^(E) Primarily E&G Enterprise activities (e.g., Continuing Studies, MBA, etc...).

University of Connecticut (Storrs & Regional Campuses)
Current Funds Budget
FY 2009

	TOTAL	E & G	AUXILIARY	UNRESTRICTED	RESTRICTED
Revenues					
Operating Fund					
State Support					
State Appropriation/Allotment	\$ 247,839,734	\$ 247,839,734		\$ 247,839,734	
Fringe Benefits	95,659,464	95,659,464		95,659,464	
Total State Support	<u>343,499,198</u>	<u>343,499,198</u>		<u>343,499,198</u>	
Student Tuition & Fees-Gross	329,785,712	298,093,184	31,692,528	329,785,712	
Tuition Waiver Discounts	<u>(43,916,333)</u>	<u>(43,916,333)</u>		<u>(43,916,333)</u>	
Net Student Tuition & Fees	285,869,379	254,176,851	31,692,528	285,869,379	
Grants & Contracts	47,171,918	46,612,039	559,879	2,150,000	45,021,918
Private Gifts & Grants	28,000,000	15,786,000	12,214,000	17,200,000	10,800,000
Investment Income	5,382,645	5,382,645		4,688,300	694,345
Sales/Services of Educational Depts	17,504,296	17,504,296		17,504,296	
Sales/Services Auxiliary Enterprises	140,391,547		140,391,547	140,391,547	
Other Revenue	<u>11,751,095</u>	<u>11,751,095</u>		<u>11,751,095</u>	
Total Operating Fund	\$ 879,570,078	\$ 694,712,124	\$ 184,857,954	\$ 823,053,815	\$ 56,516,263
Research Fund					
Research Grants and Contracts	<u>73,686,597</u>	<u>73,686,597</u>		<u>16,493,750</u>	<u>57,192,847</u>
Total Revenues	\$ 953,256,675	\$ 768,398,721	\$ 184,857,954	\$ 839,547,565	\$ 113,709,110
Expenditures/Transfers					
Education and General (E&G):					
Instruction	\$ 294,275,991	\$ 294,275,991		\$ 288,872,363	\$ 5,403,628
Research	63,645,808	63,645,808		5,993,203	57,652,606
Public Service	36,413,417	36,413,417		23,373,490	13,039,927
Academic Support	71,392,870	71,392,870		69,521,150	1,871,720
Library	24,655,364	24,655,364		24,572,131	83,233
Student Services	37,940,241	37,940,241		36,558,536	1,381,705
Institutional Support	78,528,128	78,528,128		78,510,954	17,175
Physical Plant	71,918,431	71,918,431		71,918,431	
Student Aid	<u>81,866,292</u>	<u>81,866,292</u>		<u>47,607,175</u>	<u>34,259,117</u>
Sub-Total Education and General	760,636,541	760,636,541		646,927,431	113,709,110
E & G Transfers / Debt Retirement	8,712,180	8,712,180		8,712,180	
Total Education and General	\$ 769,348,721	\$ 769,348,721		\$ 655,639,611	\$ 113,709,110
Auxiliary Enterprises					
Expenditures	157,797,099		157,797,099	157,797,099	
Mandatory Transfers for Debt Retirement	<u>12,969,873</u>		<u>12,969,873</u>	<u>12,969,873</u>	
Auxiliary Expend. / Mandatory Trans	\$ 170,766,972		\$ 170,766,972	\$ 170,766,972	
Non-Mandatory Transfers	<u>14,090,982</u>		<u>14,090,982</u>	<u>14,090,982</u>	
Total Auxiliary Enterprises	\$ 184,857,954		\$ 184,857,954	\$ 184,857,954	
Total Expenditures/Transfers	\$ 954,206,675	\$ 769,348,721	\$ 184,857,954	\$ 840,497,565	\$ 113,709,110
Net Gain (Loss)	\$ (950,000)	\$ (950,000)	\$ 0	\$ (950,000)	\$ 0

* The \$0.9 million net loss is comprised of a \$1.0 million gain from the reserve repayment for the November 2001 drawdown of \$11.5 million for the Towers Dining Center and Student Union and a \$1.9 million carry over from unspent FY07 State appropriation funds for the Eminent Faculty program.

University of Connecticut (Storrs & Regional Campuses)
Current Funds Budget Supporting Schedule for Selected Revenues
Fiscal Year 2009

Tuition & Fees

Tuition (After Discounts: \$203.3M)	\$247,192,265
Continuing Studies	
Credit Fees	12,783,793
Non-Credit Fees	3,858,200
Other Course Fees	22,786,066
Other Fees	16,772,165
General University Fee	26,400,796

Total Tuition and Fees **\$329,793,285**

Grants and Contracts (Operating Fund)

Miscellaneous Grants and Contracts	\$14,298,801
Department of Agriculture	3,850,000
Federal Financial Aid Grants	14,602,243
State Financial Aid Grants	14,420,874

Total Grants and Contracts **\$47,171,918**

Sales/Services of Auxiliary Enterprises

Jorgensen Center for Performing Arts	\$1,276,500
Athletic Department	28,118,701
Health Services	1,485,000
Student Activities	350,730
Student Union	737,000
Residential Life & Rental Properties	63,422,271
Dining Services	44,694,300
One Card	88,000
Rental Properties - Auxiliary	219,045

Total Sales/Services of Auxiliary Enterprises **\$140,391,547**

University of Connecticut (Storrs & Regional Campuses)

Auxiliary Enterprise Budgets

FY 2009

	Residential Life	Dining Services	Athletics	Jorgensen	Health Services	Student Activities	Student Union	One Card Office	Student Affairs IT	Off Campus Stdnt Svcs	Rental Prop - Aux Ent	Total
Revenues												
Sales & Services	\$63,422,271	\$44,694,300	\$28,118,701	\$1,276,500	\$1,485,000	\$350,730	\$737,000	\$88,000	\$0	\$0	\$219,045	\$140,391,547
Tuition/Fee/Other	235,000	30,000	13,844,208	1,714,174	8,522,418	4,427,396	2,933,770	273,786	0	271,655	0	32,252,407
Gifts/Endowment	<u>0</u>	<u>0</u>	<u>12,179,000</u>	<u>35,000</u>	<u>0</u>	<u>0</u>	<u>0</u>	<u>0</u>	<u>0</u>	<u>0</u>	<u>0</u>	<u>12,214,000</u>
Total Revenues	\$63,657,271	\$44,724,300	\$54,141,909	\$3,025,674	\$10,007,418	\$4,778,126	\$3,670,770	\$361,786	\$0	\$271,655	\$219,045	\$184,857,954
Expenditures												
Personal Svcs & Fringe Benefits	\$21,313,917	\$9,107,687	\$24,096,963	\$1,131,879	\$8,392,911	\$3,053,766	\$2,411,640	\$254,725	\$2,614,260	\$235,821	\$98,235	\$72,711,804
Contractuals & Commodities	17,593,154	29,436,366	19,474,675	1,843,795	987,045	1,537,365	1,319,285	107,061	678,457	91,074	361,874	73,430,151
Scholarships	235,000	30,000	9,135,000	50,000	20,000	115,000	25,379	0	0	0	0	9,610,379
Other Expenses/Transfers	<u>24,515,200</u>	<u>6,150,247</u>	<u>1,435,271</u>	<u>0</u>	<u>607,462</u>	<u>71,995</u>	<u>(85,534)</u>	<u>0</u>	<u>(3,292,717)</u>	<u>(55,240)</u>	<u>(241,064)</u>	<u>29,105,620</u>
Total Expenditures	\$63,657,271	\$44,724,300	\$54,141,909	\$3,025,674	\$10,007,418	\$4,778,126	\$3,670,770	\$361,786	\$0	\$271,655	\$219,045	\$184,857,954
Total Net Gain (Loss)	<u>\$0</u>	<u>\$0</u>	<u>\$0</u>	<u>\$0</u>	<u>\$0</u>	<u>\$0</u>	<u>\$0</u>	<u>\$0</u>	<u>\$0</u>	<u>\$0</u>	<u>\$0</u>	<u>\$0</u>

University of Connecticut
Storrs & Regional Campuses
State Appropriation

	FY 2008		FY 2009	
	<u>HB8001 Adopted Appropriation</u>	<u>Allotment Forecast</u>	<u>UConn Requested Appropriation</u>	<u>HB8001 Adopted Appropriation</u>
Operating Fund	\$212,761,424 ^A	\$220,769,110 ^A	\$215,743,066	\$217,199,850 ^B
Tuition Freeze	4,741,885	4,741,885	4,847,563	4,741,885
Regional Campus	7,330,822	7,330,822	7,536,057	7,374,425
Water Basin Planning	200,000	200,000		
Vet Diagnostic Lab	100,000	100,000	51,439	100,000
Total	\$225,134,131	\$233,141,817	\$228,178,125	\$229,416,160
Surplus Approp-MbEIN Program	200,000	200,000		
Surplus Approp-LISICOS	200,000	200,000		
	\$225,534,131	\$233,541,817		\$229,416,160

^A Includes \$2M for Center for Entrepreneurship and \$1M for Faculty Hiring Plan.

^B Includes \$2M for Center for Entrepreneurship, \$2M for Eminent Faculty and \$1M for Faculty Hiring Plan.

LISICOS=Long Island Sound Integrated Coastal Observatory System

Note that the FY08 Forecast includes the request for funds from the salary reserve account while the adopted appropriation for FY08 excludes any requests (\$18.4M) for funds from this account.

University of Connecticut (Storrs Campus)

Schedule of Costs for an Undergraduate Student

Fiscal Years 2008-2009

	In-State Undergraduate				Out-of-State Undergraduate			
	FY 2008 (Annual) Approved		FY 2009 (Annual) Approved		FY 2008 (Annual) Approved		FY 2009 (Annual) Approved	
	Amount	%	Amount	%	Amount	%	Amount	%
Tuition, Full-time	\$ 6,816	5.58%	\$ 7,200	5.63%	\$ 20,760	5.62%	\$ 21,912	5.55%
General University Fee	1,416	5.36%	1,488	5.08%	1,416	5.36%	1,488	5.08%
Other Fees:								
Student Newspaper	14		14		14		14	
Student Government (USG)	76	15.15%	86	13.16%	76	15.15%	86	13.16%
WHUS	18		18		18		18	
Student Union (SUBOG)	46	27.78%	46		46	27.78%	46	
UCONN TV	10		10		10		10	
Transit Fee	70	40.00%	70		70	40.00%	70	
Student Union Building Fee	26		26		26		26	
Infrastructure Maintenance	360	5.26%	380	5.56%	360	5.26%	380	5.56%
Subtotal Other Fees	620		650		620		650	
Total Tuition & Mandatory Fees	\$ 8,852		\$ 9,338		\$ 22,796		\$ 24,050	
Room Fee	4,698	8.00%	5,090	8.34%	4,698	8.00%	5,090	8.34%
Board Fee - Ultimate Meal Plan ^A	4,152	6.03%	4,414	6.31%	4,152	6.03%	4,414	6.31%
Grand Total ^A	<u>\$ 17,702</u>	6.46%	<u>\$ 18,842</u>	6.44%	<u>\$ 31,646</u>	6.09%	<u>\$ 33,554</u>	6.03%
Board Fee - Value Meal Plan ^B	3,960	6.00%	4,210	6.31%	3,960	6.00%	4,210	6.31%
Grand Total ^B	\$ 17,510	6.46%	\$ 18,638	6.44%	\$ 31,454	6.09%	\$ 33,350	6.03%

^A The Ultimate Meal Plan represents the most expensive meal plan available (Per semester: unlimited meals, 500 points, 35 flex passes). Lower cost meal plan options are available.

^B The Value Meal Plan represents the most popular meal plan available (Per semester: unlimited meals, 200 points, 40 flex passes). A lower cost meal plan option is available.

University of Connecticut (Storrs Campus)

Schedule of Costs for a Graduate Student

Fiscal Years 2008-2009

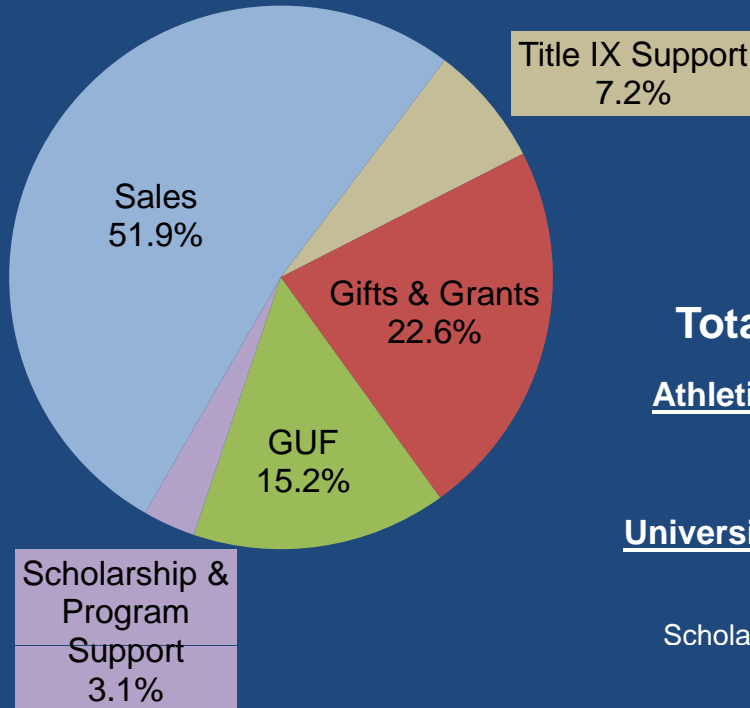
	In-State Graduate				Out-of-State Graduate			
	FY 2008 (Annual) Approved		FY 2009 (Annual) Approved		FY 2008 (Annual) Approved		FY 2009 (Annual) Approved	
	Amount	%	Amount	%	Amount	%	Amount	%
Tuition, Full-time	\$ 8,442	5.63%	\$ 8,910	5.54%	\$ 21,924	5.55%	\$ 23,130	5.50%
General University Fee	1,044	5.45%	1,098	5.17%	1,044	5.45%	1,098	5.17%
Other Fees:								
Student Activity Fee	26		26		26		26	
Graduate Matriculation Fee	84		84		84		84	
Transit Fee	70	40.00%	70		70	40.00%	70	
Student Union Building Fee	26		26		26		26	
Infrastructure Maintenance	360	5.26%	380	5.56%	360	5.26%	380	5.56%
Subtotal Other Fees	566		586		566		586	
Total Tuition & Mandatory Fees	\$ 10,052		\$ 10,594		\$ 23,534		\$ 24,814	
Room Fee	5,344	8.00%	5,788	8.31%	5,344	8.00%	5,788	8.31%
Board Fee - Ultimate Meal Plan ^A	4,152	6.03%	4,414	6.31%	4,152	6.03%	4,414	6.31%
Grand Total ^A	<u>\$ 19,548</u>	6.39%	<u>\$ 20,796</u>	6.38%	<u>\$ 33,030</u>	6.02%	<u>\$ 35,016</u>	6.01%
Board Fee - Value Meal Plan ^B	3,960	6.00%	4,210	6.31%	3,960	6.00%	4,210	6.31%
Grand Total ^B	\$ 19,356	6.39%	\$ 20,592	6.39%	\$ 32,838	6.02%	\$ 34,812	6.01%

^A The Ultimate Meal Plan represents the most expensive meal plan available (Per semester: unlimited meals, 500 points, 35 flex passes). Lower cost meal plan options are available.

^B The Value Meal Plan represents the most popular meal plan available (Per semester: unlimited meals, 200 points, 40 flex passes). A lower cost meal plan option is available.

Please note that for Graduate students living in Graduate student housing, the meal plan is optional.

University of Connecticut
 Division of Athletics & Recreational Services
 Proposed Budget for Fiscal Year 2009



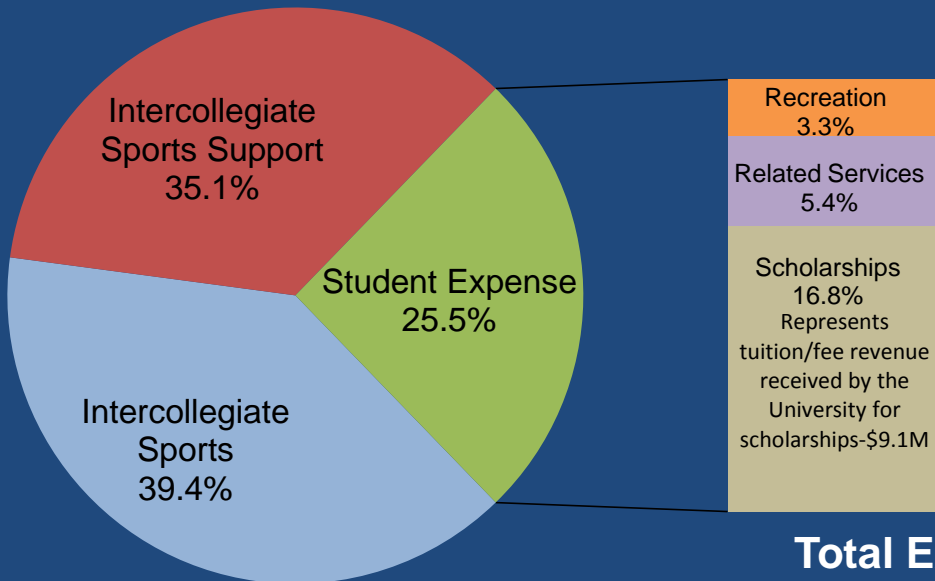
Total Revenue: \$54.1M

Athletics Share: 74.5% \$40.3M

Sales - \$28.1M
 Gifts & Grants - \$12.2M

University Support: 25.5% \$13.8M

GUF - \$8.2M
 Title IX Support - \$3.9M
 Scholarship & Program Support - \$1.7



Total Expense: \$54.1M

Intercollegiate: 74.5% \$40.3M

Sports - \$21.3M
 Not Sport-Specific - \$19.0M

Student Expense: 25.5% \$13.8M

University of Connecticut (Storrs & Regional Campuses)
 Schedule of Total Financial Aid and Tuition Funded Financial Aid
 FY's 2005-2009

<u>Total Financial Aid</u>	<u>FY05</u>	<u>FY06</u>	<u>FY07</u>	<u>FY08 Forecast</u>	<u>FY09 Budget</u>
Need-Based					
Grants	\$40.4	\$43.7	\$50.7	\$54.0	\$59.9
Work Study / Student Labor	7.1	7.5	7.7	8.1	8.7
Total Need-Based	\$47.5	\$51.2	\$58.4	\$62.1	\$68.6
University Scholarships	\$21.6	\$21.9	\$24.9	\$25.4	\$28.9
Non-University Scholarships	5.8	5.6	5.1	5.2	5.5
Other Student Labor	6.5	6.3	6.2	7.8	7.6
Loans	101.1	111.5	118.2	127.1	132.7
Tuition Waivers	33.8	34.6	37.8	39.9	43.9
Total Financial Aid ^A	\$216.3	\$231.1	\$250.6	\$267.5	\$287.2

<u>Tuition Funded Financial Aid</u>	<u>FY05</u>	<u>FY06</u>	<u>FY07</u>	<u>FY08 Forecast</u>	<u>FY09 Budget</u>
Need-Based Grants	\$24.1	\$26.2	\$31.3	\$28.5	\$32.3
Need-Based Work Study Match / Student Labor ^B	2.8	3.1	3.0	2.8	3.2
Other Student Labor	2.4	2.3	2.3	2.4	2.4
Scholarships	9.4	9.7	11.4	11.9	14.2
Tuition Waivers	33.8	34.6	37.8	39.9	43.9
Total Tuition Funded Financial Aid	\$72.5	\$75.9	\$85.8	\$85.5	\$96.0

Total Tuition Funded as a % of Gross Tuition Revenue	38.2%	37.7%	39.5%	37.4%	38.9%
--	-------	-------	-------	-------	-------

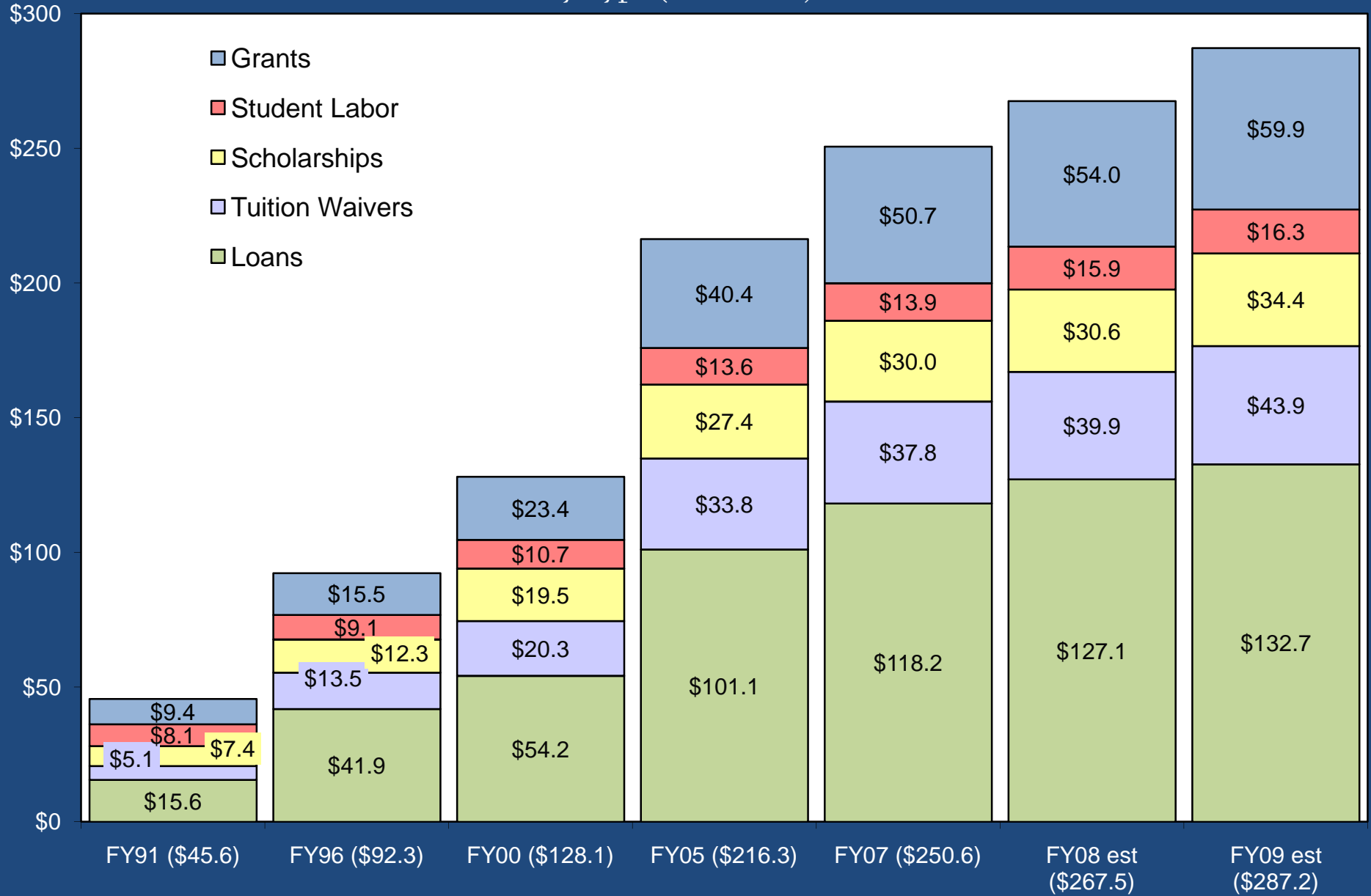
Tuition Funded Need-Based as a % of Net Tuition Revenue	17.2%	17.6%	19.1%	16.6%	17.5%
---	-------	-------	-------	-------	-------

^A Scholarships given directly to students from outside organizations and student loans (mostly Federal funded) are not included in the Current Funds budget.

^B Student Labor has averaged \$1.7-\$2.1 million per year.

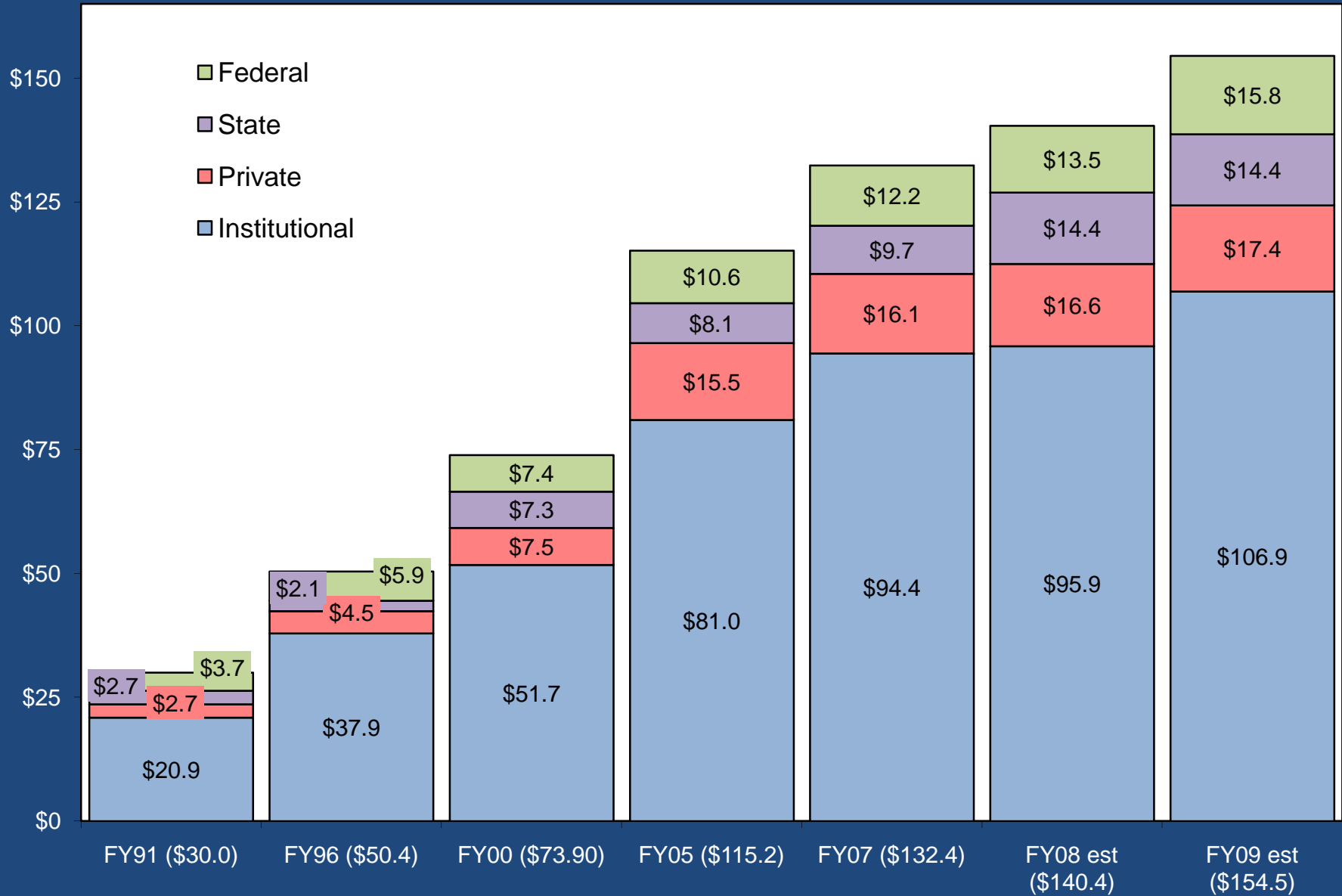
University of Connecticut (Storrs & Regional Campuses)

Student Financial Aid by Type (in millions) - Selected Fiscal Years

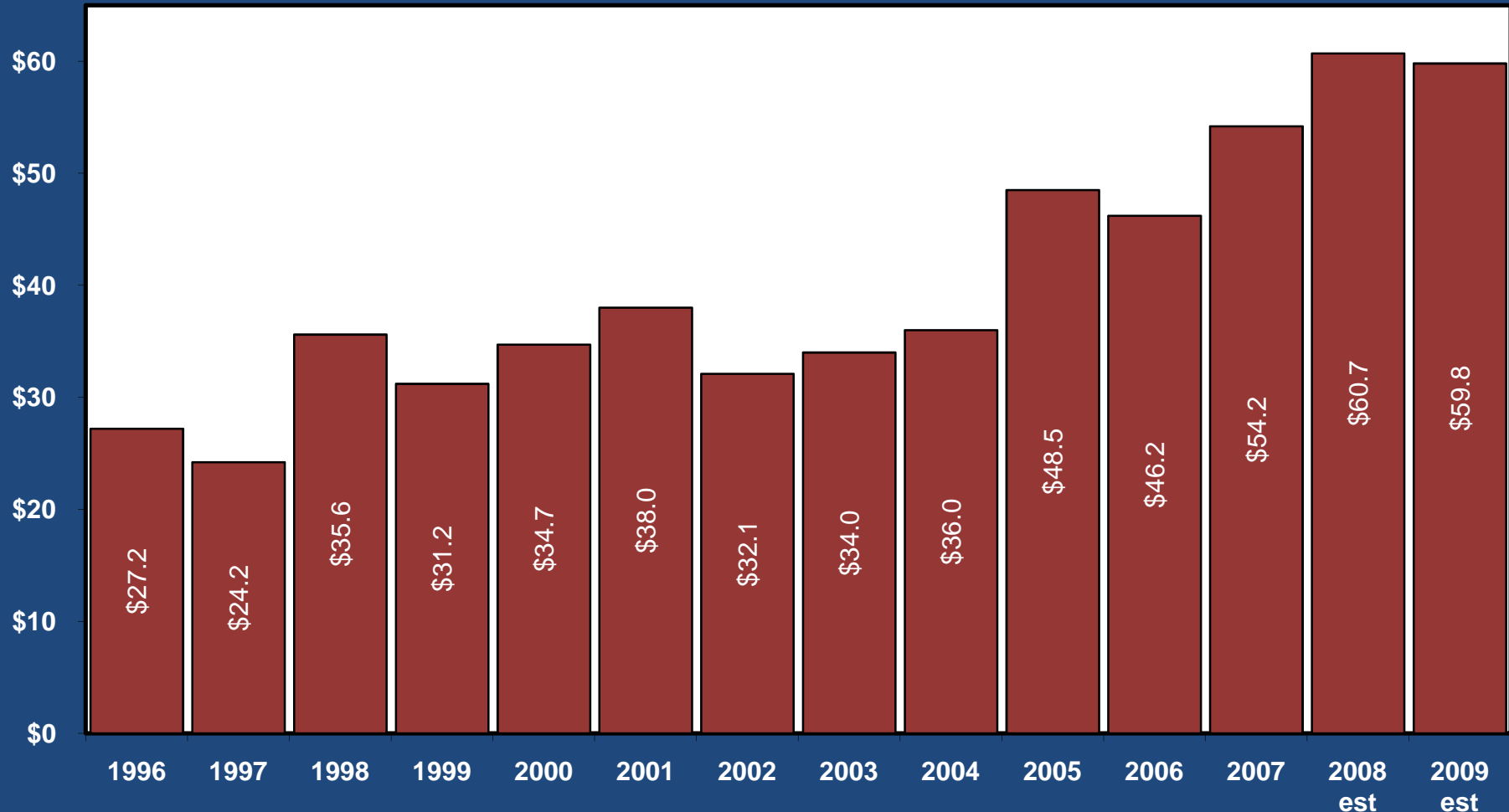


University of Connecticut (Storrs & Regional Campuses)

Student Financial Aid by Source-Excluding Loans (in millions) - Selected Fiscal Years



University of Connecticut (Storrs & Regional Campuses) Current Funds Unrestricted Fund Balance (in millions) Fiscal Years 1996-2009



FY02 includes FY01 Surplus Appropriation of \$2.2 million budgeted for FY03 and \$1.8 million of previously deferred revenue to reflect GASB requirement regarding Summer Sessions. FY05 included \$9.0 million of unexpended equipment funds that were carried forward to be spent for equipment purchases in FY06. From FY04 forward, \$1 million of the net gain represents a reserve repayment for the November 2001 drawdown of \$11.5 million for Towers Dining Center and Student Union. FY07 included \$3.3 million of unspent State appropriation funds for the Center for Entrepreneurship (\$1.3 million) and the Eminent Faculty (\$2.0 million) programs that were carried forward to be spent in FY08. FY08 included \$1.9 million of unspent State appropriation funds for the Eminent Faculty program that was carried forward from FY07.

University of Connecticut (Storrs & Regionals)

Statement of Changes in Net Assets

For the Year Ended June 30, 2007

	Operating Fund	Research Fund	Subtotal	Other Funds	Total
Net Assets, June 30, 2006					
Restricted and invested in capital net of related debt	\$ 11,299,630	\$ (26,553)	\$ 11,273,077	\$ 1,278,040,479	\$ 1,289,313,556
Unrestricted	28,582,235	17,646,739	46,228,974	48,109,093	94,338,067
Total Net Assets	\$ 39,881,865	\$ 17,620,186	\$ 57,502,051	\$ 1,326,149,572	\$ 1,383,651,623
 Fiscal Year 2007 Change					
Restricted and invested in capital net of related debt	\$ 394,042	\$ 979,106	\$ 1,373,148	\$ 5,115,607	\$ 6,488,755
Unrestricted	6,364,915	1,587,517	7,952,432	19,556,748	27,509,180
Subtotal	\$ 6,758,957	\$ 2,566,623	\$ 9,325,580	\$ 24,672,355	\$ 33,997,935
 Net Assets, June 30, 2007					
Restricted and invested in capital net of related debt	\$ 11,693,672	\$ 952,553	\$ 12,646,225	\$ 1,283,156,086	\$ 1,295,802,311
Unrestricted	34,947,150	19,234,256	54,181,406	67,665,841	121,847,247
Total Net Assets	\$ 46,640,822	\$ 20,186,809	\$ 66,827,631	\$ 1,350,821,927	\$ 1,417,649,558

University of Connecticut (Storrs & Regionals)
 Current Funds Statement of Operations
 FY07
 (Dollars in Millions)

Current Funds (Operating & Research) Revenues:

Operating Fund	
State Support	\$305.9
Tuition	177.8
Fees	74.6
Gifts, Grants & Contracts	65.0
Investment Income	11.4
Sales & Service Education	14.9
Auxiliary Enterprise Revenue	130.0
Other Revenue	<u>10.9</u>
Total Operating Fund	790.5
Research Fund	<u>71.8</u>

Total Current Funds (Operating & Research) Revenues **\$862.3**

Current Funds (Operating & Research) Expenditures / Transfers:

Operating Fund	
Personal Services	\$358.8
Fringe Benefits	122.2
Other Expenses	143.7
Energy	30.0
Equipment	10.9
Student Financial Aid ¹	76.7
Net Transfers - Mandatory	22.2
Net Transfers - Auxiliary Non-Mandatory	13.2
Net Transfers - E&G Non-Mandatory	<u>6.1</u>
Total Operating Fund	783.8
Research Fund	<u>69.2</u>

Total Current Funds (Operating & Research) Expenditures / Transfers **\$853.0**

Current Funds Net Gain ² **\$9.3**

Non-Current Funds Items

Net Transfers from Current Funds	\$42.2
Capitalization Adjustment for Items Expensed in Current Funds	(142.3)
Depreciation Expense	88.0
Non-Operating Expense Net of Current Funds Items ³	(29.6)
Capital Additions	<u>66.4</u>
Total increase in Net Assets	\$34.0

Net Assets - beginning of year ⁴ **\$1,383.7**

Net Assets - end of year ⁴ **\$1,417.7**

¹ Includes \$2.2 million of student work study expenditures.

² Net Gain of \$9.3 million: Unrestricted=\$7.9 million, Restricted=\$1.4 million.

³ State Support, Gifts and Investment Income are included in Current Funds; interest expense (net of state debt service commitment for interest) is the primary remaining component of Non-Operating Expense.

⁴ Per University Audited Annual Financial Statements.




University of Connecticut
Financial Planning and Management

June 24, 2008

Lorraine M. Aronson
Vice President

To: Members of the Board of Trustees

From: Lorraine M. Aronson 
Vice President and Chief Financial Officer

Bruce A. DeTora 
Chief Financial Officer

Subject: **STATE APPROPRIATION CURRENT SERVICES REQUEST FOR
THE BIENNIUM FISCAL YEARS 2010 AND 2011 FOR THE
UNIVERSITY OF CONNECTICUT, STORRS & REGIONAL
CAMPUSES**

RECOMMENDATION:

That the Board of Trustees approve a Current Services State Appropriation Request for the Biennium Fiscal Years 2010 and 2011 as follows: \$259.1 million for Fiscal Year 2010 and \$271.1 million for Fiscal Year 2011 for the Storrs-based program.

BACKGROUND:

The FY 2010 Current Services State Appropriation Request is \$259.1 million. The University is requesting Collective Bargaining funds for settled contracts of \$10.3 million, New Building Openings Operating and Maintenance (O&M) funds of \$0.9 million, and inflationary funds of \$0.06 million. Also, the University has budgeted \$102.3 million for Current Services fringe benefits, which are not appropriated directly to the University. The total FY 2010 Current Services State Appropriation Request represents an increase over the FY 2009 level of \$11.3 million.

The FY 2011 Current Services State Appropriation Request of \$271.1 million is predicated upon the FY 2010 Current Services State Appropriation request of \$259.1 million. In addition, the University is requesting Collective Bargaining funds for settled contracts of \$10.9 million, New Building Openings Operating and Maintenance (O&M) funds of \$1.0 million, and inflationary funds of \$0.06 million. Also, the University has budgeted \$109.3 million for Current Services fringe benefits, which are not appropriated directly to the University. The total FY 2011 Current Services State Appropriation Request represents an increase over the FY 2010 level of \$12.0 million.

Please see the attached schedule for more detailed information.

An Equal Opportunity Employer

352 Mansfield Road Unit 2122
Storrs, Connecticut 06269-2122

Telephone: (860) 486-5115
Facsimile: (860) 486-1070
e-mail: lorraine.aronson@uconn.edu

University of Connecticut
Storrs & Regional Campuses
Current Services State Appropriation

FY 2009 Approved Appropriation

Operating Fund	\$217,199,850
Tuition Freeze	4,741,885
Regional Campus	7,374,425
Vet Diagnostic Lab	<u>100,000</u>
Total	\$229,416,160
FY08 Reserve for Salary Account Request	7,595,926
FY09 Reserve for Salary Account Request	10,827,648

Adjusted Appropriation

\$247,839,734

Collective Bargaining - Settled Contracts	10,309,571
New Buildings	933,383
Inflation	62,945

FY 2010 Requested Appropriation

\$259,145,633

Collective Bargaining - Settled Contracts	\$10,903,994
New Buildings	1,010,787
Inflation	63,763

FY 2011 Requested Appropriation

\$271,124,177